

SSR Fascia Removal

- **Please read these instructions all the way through before beginning.**
- Although this installation can easily be accomplished by one person, a second set of hands is helpful and will increase the confidence level.

Tools Recommended:

- 7 and 10mm socket and ratchet with your favorite long extension
- Removal tool for plastic clips
- Flashlight (optional)

Procedure:

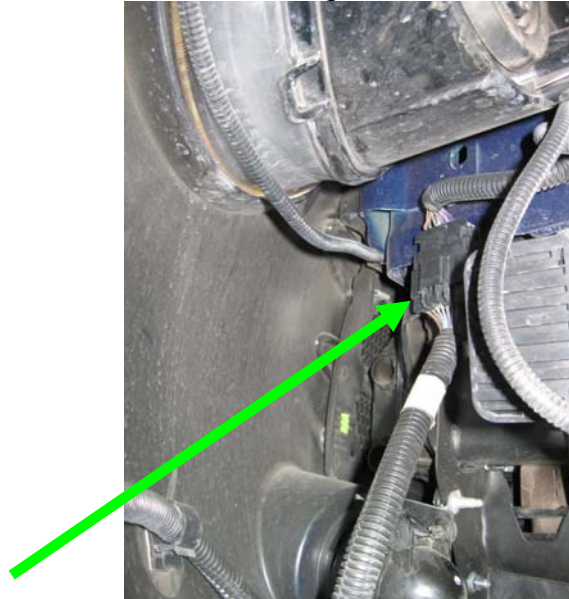
1. Remove the Chevron Bar by unscrewing the two 7mm screws on the top of the bar and pulling the Velcro at the end of the bar loose from the headlights. The bar is best pulled straight forward, as there are a couple spring clips in the very center area.



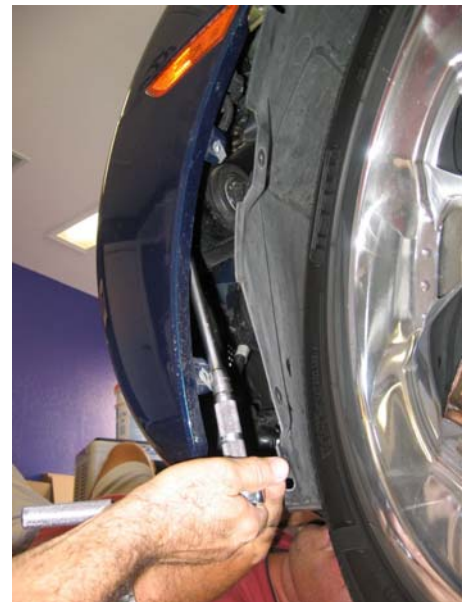
2. Remove the 4 nylon push-in retainers from the bottom of the fascia (two per side) and the two 7mm screws from each fender area near the tire. Note: you will probably have to turn the steering wheel fully left or right to remove these screws.



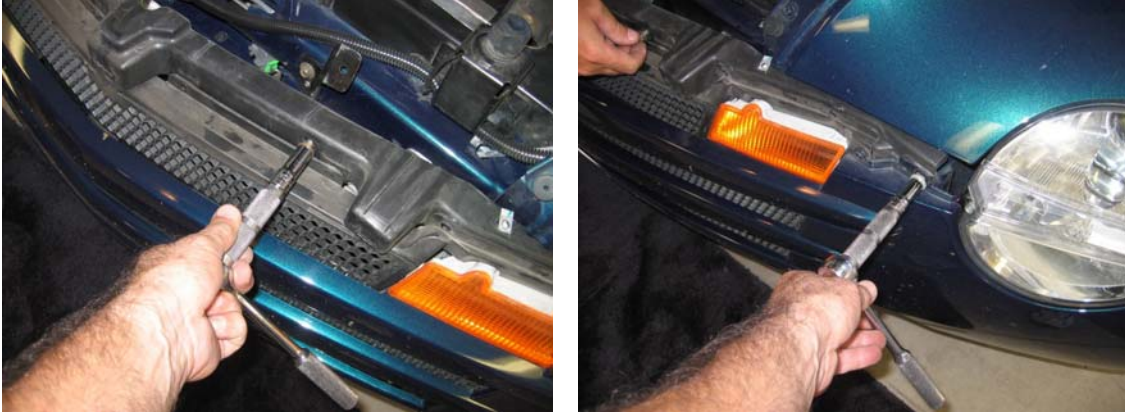
3. Disconnect the fascia electrical plug. This is located on clip attached to the frame member just inboard of the driver's headlight.



4. Gain access to the three screws on each side of the fascia near the side marker lights by pulling the fender liner away from the fascia. Using a 10mm socket and your favorite extension, remove the three screws from each side. One is at the rear corner, the second is just forward of the marker light and the third is right next to the headlight.



5. Using the same 10mm socket, remove the two bolts from that were hidden under the Chevron Bar. These are the ones that screw into the black brackets from the upper frame cross-member. If you have a second pair of hands, have them support the fascia by holding the black backing structure that was under the chevron bar.....Now remove the two nuts on studs between the turn signals and headlights that are still holding the fascia.



6. The fascia can now be removed and set in a safe place.



Re-assembly is simply the reverse process.

You are now an expert.

My best regards,

Mike